



In this issue

- Guests
- John Boyle
- Seminars at the SAN
- Red Shield Appeal
- Peter Kipps BHCC
- Tony McClelland Riding the Rhine
- RAWCS
- Cancer Council
- NZ Rugby World Cup?
- District Changeover
- Vale PP Graham Rushforth
- Club plan 2010-11 - budget
- PROJECT SELECTION & REVIEW CRITERIA
- Ross Egan's Trivia night a great success—details next week

Meeting Apology

Please use the club website before 3pm on meeting day to apologise or add a guest or you will be required to reimburse the club for your meal cost.

Back Pages

Guest speakers
Market roster
Door team
Happy days

www.kuringgairotary.org.au The club meets every Monday 6.30pm at West Pymble Bowling Club

Guests

President Michael welcomed guests Joyce Cribb, Ross Johnson, Shana Phillips and Gwen Ivey

Ross Johnson is the previous manager of WPBC and Greg Newling thanked him for his continuing support during his Presidency

John Boyle

President Michael spoke to John Boyle.

John said he has had leg problems and hopes to return to Rotary in several weeks

Seminars at the SAN

5 June 8.30 am Rotary Foundation Seminar SAN

19 June 8.30 Ethics in Business Seminar SAN

Red Shield Appeal

The Red Shield Appeal is 28 & 29 May

Peter Kipps BHCC

Peter has become a major player and contributor to the Bobbin Head Cycle Classic.

Peter presented the Club with an update and showed the progress and the plan which requires more volunteers.

Ross Egan volunteered to become the leader for Ryde Council and Judy Houghton for Willoughby Council

Linda Lam Rolfe volunteered for Media

www.bobbinheadcycleclassic.com.au

We may need help with some content

Anyone experienced in writing for web?

Bobbin Head Cycle Classic

Marketing

Objective

- Primary - to get cyclists
 - Secondary - to make it family friendly
 - Long term – an iconic community event
- Area to be covered
- Turramurra Club - Kuring-gai, Hornsby, Gosford
 - Kuringgai Club - Ryde, Willoughby

Marketing Activities

- Web site
- Bike shops
- Health clubs
- Bike Clubs
- Councils
- Newsletter
- Facebook, Google
- Local paper /Radio
- Road banners
- Corporate groups
- SES, RFS, St Johns
- Lifeline
- Sponsors

Tasks – Bike and Health Clubs

Make list of bike shops, health centres
Visit each to discuss:

- Promoting in newsletter
- Poster in shop
- Flyers
- Minor sponsorship

Local Council

Visit councils

- Will they promote in their Newsletter?
- Can we put an insert in rates statement?
- Can we put up road banners?

Marketing Process

- A Rotarian becomes the coordinator for a Municipality
- They need 1 to 2 helpers
- The team visits:
- The council
- Bike shops, maybe 5
- Health centres, maybe 5 to 10

What marketing materials?

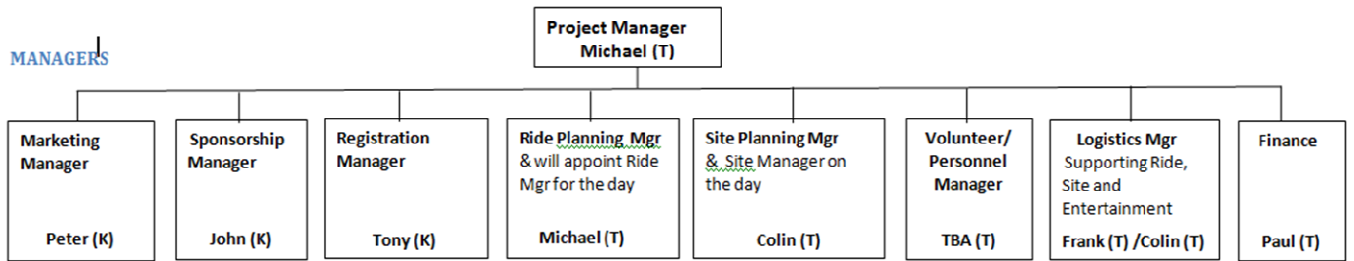
1 page flyer by end of week
Printed flyers & posters 1st week June

Pedter Kipps BHCC Project Management Outline

Bobbin Head Cycle Classic

Project Management Outline V1.2

15 May 2011



TEAM MEMBERS

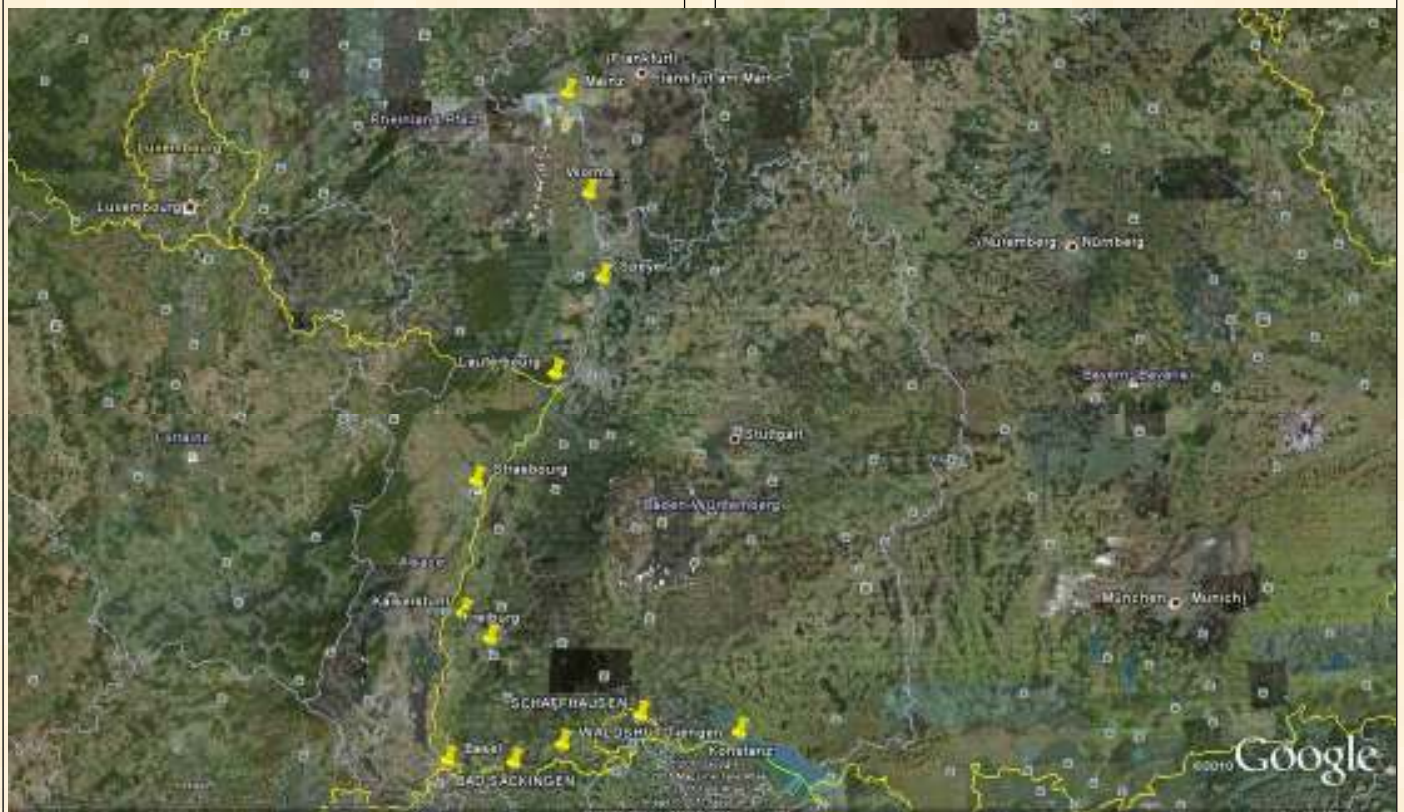
Lou Laurie Marcello (Web) Peter K Others from both clubs	John T. Emma-Lifeline Rotarians with contacts.	Tony ANO ANO	Michael John Peter T Helpers to setup Marshalls Drinks helpers	Colin Frank Roger D (food and drink) Emyr (Music) Helpers to Setup	ANO ANO	Frank, Colin, John On the day John to manage ride logistics and Colin site logistics. Frank is away.	Paul
---	--	--------------------	---	--	------------	--	------

RESPONSIBILITIES

Marketing Plan Target markets Branding Web Brochures Mailouts Advertising/PR Radio/TV Social media Adv Road signs. Bike shops, groups, clubs etc. Newsletters/ Info updates	Plan sponsorship campaign. List targets Design/get marketing pieces. Sell sponsorships.	Registration policy. Track web hits. Rider sponsorship plan. Collect Money Pay Bills Pre event rego. Mail bibs/nos. etc Rider check-in 'Late rego' on day. Start / Finish plan Certificates	Route Trafficplan Police Council SES St Johns Drinks on road First aid on road Risks B Hd road Risks B Hd reserve Risks Pac H'way	Access, crowd control, parking. Risk management site, stalls, food & bev, layout, sound equipment, music, barriers, fencing, start finish requirements, electricity, first aid at finish, demonstrations, bike racks, Rotary stands	Plan duties. Compile personnel lists. Recruit personnel.	Selecting, costing sourcing, collecting, returning: Ride equipment Site equipment Stalls and Entertainment requirements	Creating budget Updating budget Accounting
---	--	---	---	--	--	--	--

Tony McClelland Riding the Rhine

Konstanz on South East to Mainz central North



Riding the Rhine

Tony said many of our members should be able to complete this Ride. Jannet is 58 and had only ridden 1,500k during her lifetime and she handled the distance very well. Unfortunately we had 5 day of 43degrees and some headwinds which added to the fun.

Tony and Jannet considered the options of taking their own bikes, prebooking accommodation, camping. They chose a self supported ride where the bicycle and accommodation ate provide along with collection and delivery of luggage every day. This worked very well. The total distance was approximately 700k but they rode almost 900k because they discovered they became lost on many occasions.

We purchased 2 rides

Konstanz to Basel zig zagging Germany and Switzerland
Basel to Mainz zig sagging Germany and France

We rode

Konstanz	Badenweiler/Mullheim
Schaffharsen	Freiberg
Waldshut - Tiengen	Kaisersthul
Bad Sackengen	Kehl
Basel	Strasbourg

20k east of Basel - Augusta Raurica, is the best preserved Roman town north of the Alps. The Romans bred woolly grazing pigs,

2000-year-old settlement on the southern bank of the Rhine,. It is named after the Celtic Rauriker tribe and the Roman Emperor Augustus. In its heyday the city was home to as many as 20,000 inhabitants. Workshops, commercial enterprises, taverns, temples and public baths are closely strung close together. Displaying countless finds such as the largest silver treasure dating from Late Antiquity

Just after Konstanz we saw the second largest Waterfall in Europe.

Most of the ride was on dedicated cycle tracks ranging from excellent hotmix to good gravel surfaces. The tracks were mostly in view of the Rhine but the ride included a trip to the Black Forest and some vineyards.

Riding the Rhine



Riding the Rhine



RAWCS

Our Eastern Region of RAWCS have just published our Newsletter called the AWCS Rover May edition and a Link is below to allow you to download it directly from our Eastern Region Website.

http://www.rawceastern.org.au/downloads/doc_download/66-rawcs-rover-may-2011.html thanks to the journalistic and computer skills of our Editor and Webmaster.

I have also attached a PDF copy of the Rover to this email.

There are some interesting articles of projects currently underway in PNG and the Philippines and the fantastically successful Furniture Project.

We have asked all District Secretaries to distribute the Rover to all Clubs if possible, so If you are reading the Rover for the first time and you want any information on any Projects or even if you wish to volunteer or donate funds, contact you RAWCS Chairman in your District, Their email address should be in your District Directory.

I hope that you take a few minutes to download and read the Rover!

Cancer Council

It's morning tea time for Kuring-gai & Pittwater!

Traditional scones, hummus, tea cakes and dumplings are just some of the items set to be on the menu at this May's Australia Biggest Morning Tea, when Kuring-gai & Pittwater will come together to raise funds for Cancer Council.

Whether you've experienced cancer first hand or are supporting the one in two Australians who will be diagnosed with cancer by 85, Cancer Council is encouraging all of Kuring-gai & Pittwater to make their cup count by having a morning tea for cancer.

So switch on the kettle, register now and invite your friends, colleagues and family to join Australia's Biggest Morning Tea in May and help reduce the impact of cancer in Kuring-gai & Pittwater.

In 2011, Cancer Council is aiming to raise \$11 million nationally to continue to help fund vital cancer research, prevention, information and support services, like the Cancer Council Helpline (13 11 20).

Kuring-gai & Pittwater is officially invited to join Australia's Biggest Morning Tea this May

Who: Get together friends, family, school mates, work colleagues, or anyone who wants to help beat cancer in your community.

When: The official date is Thursday 26 May, but you can hold a morning tea any time during May.

Where: Anywhere! You can hold your morning tea at home, at work or at school, or in your local town hall. The possibilities are endless!

How: Hosting a morning tea is easy. Register at www.biggestmorningtea.com.au or call 1300 65 65 85, invite your friends, family or work colleagues, and encourage them to donate to the cause. Make your cup count – it doesn't matter how big or small your morning tea is.

To register to host a morning tea, or to find out more, visit www.biggestmorningtea.com.au or call 1300 65 65 85.

You can also find us on [Facebook](#).

Media contact: Isabelle Chappin 02 9334 1966 or email isabellec@nswcc.org.au

NZ Rugby World Cup?

Hi Michael, President of the Rotary Club of Ku-Ring-Gai
On Friday 9 September 2011 the All Blacks play Tonga in the first match of the World Cup in New Zealand. Over the following 44 days, 48 games of Rugby will be played at 13 venues around New Zealand to find the greatest rugby team in the world. What a spectacle in one of the greatest rugby countries of the world.

Contemplate some of the match-ups.

How about this for a weekend; Australia v Ireland at Eden Park Auckland Saturday 17 September then just down the road to Wales v Samoa at Hamilton on the 18th

Or how about a week in beautiful Nelson taking in Italy v USA on Tuesday 27th of September followed by Australia v Russia on Saturday 1 October

Worried about the cost? Then New Zealand Rotarians have a special offer for you. Rather than stay in commercial accommodation, why not stay with New Zealand Rotarians and experience true kiwi hospitality? Bed and breakfast for \$150 (which includes the donation to polio plus) is a real bargain but more importantly it's a way to "bridge continents". You'll make lifetime friends and get a real sense of New Zealand.

Rotarian convener Allan Brown of the Rotary Club of Hutt City says 'We have plenty of hosts available in all venues, and we can even find hosts in locations other than game venues if you want to go somewhere else between games'

It can all be done on the web. Take a look at the website <http://www.rotarynzrugbyhosting.co.nz> and see how easy it is take advantage of combining some great games with the chance to meet some new Rotary friends. If you have been thinking about the trip of a lifetime, now is the time to act. [More tickets are being released](#), New Zealand Rotarians are keen to open their homes to Rotarian visitors and this is the opportunity to have the trip of a lifetime and support our charity 'Polio Plus'.

It would help me Michael if you would share this message with your club members. You can download details for your club bulletin by clicking the links below, or simply forward this newsletter to your editor.

Thanks a lot
Allan Brown-Convener

District Changeover

**FOR YOUR DIARY
FRIDAY 1ST JULY 2011
6.30 FOR 7.00PM
AT HORNSBY RSL FOR DINNER
DISTRICT 9680 CHANGEOVER**

- Support the outgoing/incoming District Governors
 - Hear about the NEW ROTARY
 - For newer members -
 - v Get to know people in the District Team better
 - v Get to know the District roles
 - v Meet members of other Clubs
- Never been to a District Changeover???
Haven't been for a few years???

WELL, YOU ARE ESPECIALLY INVITED THIS YEAR

MORE DETAILS WILL FOLLOW SOON

DON'T FORGET THE DIARY

Roger Norman
PR, District Changeover Team
Rotary Club of Turramurra District Changeover

Vale PP Graham Rushforth

Fellow Rotarians and friends

It is my sad duty to report the death this morning of PP Graham Rushforth, formerly of Lane Cove Rotary and more recently with our Rotary Club of Ryde.

Graham had a small stroke last Thursday which was confirmed by a CT Scan on Monday, which is why he put in an apology for Pride Of Workmanship. He was prescribed total rest, to take some medication, to have another scan on Wednesday and see the doctor on Thursday. Unfortunately last night he had an aneurism and passed away on 18 May. Our thoughts are with his wife Sharon at this time.

I will advise funeral details as soon as I know them.

Regards,
Allen Horrell
President, Rotary Club of Ryde

Club plan 2010-11 - budget

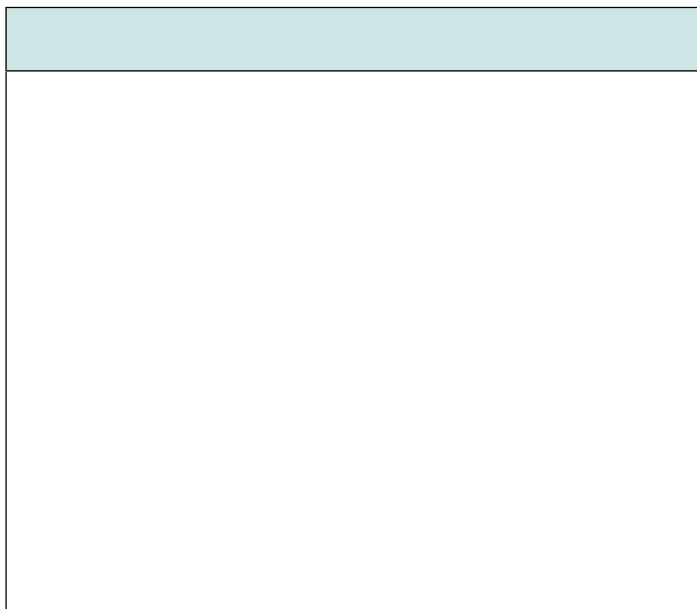
GENERAL ACCOUNT	Budget 2010/11	YTD 5/05/2011 excl. GST	Revised budget excl. GST
INCOME			
Changeover Dinner Receipts	4,500	0	4,500
Christmas Function Receipts	1,700	1,347	1,347
Club Fines	1,500	0	0
Interest Received	60	65	78
Membership Dues	13,410	10,904	11,714
Sundry Income	0	34	34
Tennis day	1,000	142	142
Weekly Meal Receipts	32,000	25,043	30,000
TOTAL INCOME	54,170	37,535	47,815
EXPENDITURE			
Annual Report	200	0	200
Audit Expenses	150	0	150
Changeover Dinner Expenses	5,000	1,779	3,788
Christmas Function Expenses	1,600	1,418	1,418
Computer & Printer for Club Administration	700	0	0
Door Prizes	460	350	420
Dues - Rotary International	3,000	2,350	2,350
Dues - District (incl Insurance & Conference Levy)	4,860	4,619	4,619
Equipment	0	618	618
Membership development - 1st 2 Meals per Guest	560	0	0
Membership development - Information Leaflets	250	0	0
Membership development - Information Stalls	450	0	0
Membership development - Other New Projects	240	0	0
Members' Welfare (Cards and Flowers)	200	0	0
New Member Badges and Uniforms	700	1,144	1,144
Postage & Stationery	100	0	0
Post Office Box Rental	70	0	0
PR - Awareness of Gordon Markets	100	0	0
PR - Printing of Brochures & Materials + Web Site	500	0	0
PR - Develop Relations with Media	0	0	0
Printer Consumables	200	0	0
RDU Magazine	1,530	1,522	1,522
Speaker Presentations/Donations to Rotary Foundation	1,000	0	1,000
Signage and Flags and Banners	400	0	0
Sundry expenditure	0	2,134	2,134
Trivia Night Expenses	500	0	0
Weekly Meal Costs	31,000	23,793	28,550
Web Development	0	0	0
TOTAL EXPENDITURE	53,770	39,727	47,913
SURPLUS/(DEFICIENCY) FOR THE YEAR/YTD	400	-2,192	-98

PROJECT SELECTION & REVIEW CRITERIA

1.	Situation Assessment	Response
1. 1	Community Assessment	
	Have community representatives been widely consulted?	Yes / No
	What are the community's needs?	
	What are the community's priorities?	
1. 2	Club Assessment	
	What are the club members' interests?	
	What are the club members' strengths, skills and abilities?	
	How much time and resources can club members commit?	
	Does the club have previous experience of similar projects?	
2.	Choice of Project	
	What possible projects match the assessments, including the estimated duration and resources needed?	
	Which is the preferred project?	
	Which of the following will the preferred project address? Housing Clean water Hunger Health Education Poverty Environment Peace	Yes / No Yes / No Yes / No Yes / No Yes / No Yes / No Yes / No Yes / No
	What time involvement of club members will the preferred project require?	
	What equipment will the preferred project require?	
	What materials will the preferred project require?	
	What finance will the preferred project require?	
	How long will the preferred project take from planning to completion?	
	Will the outcome of the preferred project be commensurate with the effort and resources put into it?	Yes / No
	Will the preferred project be self-sustaining once completed?	Yes / No
	Does the preferred project meet the community's needs and match its priorities?	Yes / No
	Does the preferred project match the club members' interests, skills and abilities?	Yes / No
	Will the preferred project involve members of the community?	Yes / No
	Does the preferred project offer the opportunity for corporate/ business sponsorship?	Yes / No

(continued) PROJECT SELECTION & REVIEW CRITERIA

	Does the preferred project offer the opportunity for corporate/business sponsorship?	Yes / No
	Does the preferred project fall within the RI's/the club's strategic plans?	Yes / No
	Does the preferred project fall within one of the avenues of service?	Yes / No
	Does the preferred project fit into the club's planned balance of projects: Across the 5 avenues of service; and Between local and international projects?	Yes / No Yes / No
	Does the preferred project fall within the mission of the Rotary Foundation?	Yes / No
	Is the preferred project eligible for a matching grant?	Yes / No
	Is there a Rotary club that can manage the preferred project if it is in another District?	Yes / No
	Does the preferred project fall within the criteria of the Presidential citation program?	Yes / No
3.	Project Plan	
	What are the goals and objectives of the project?	
	What is the plan for carrying out the project?	
	What is the budget for the project?	
	What fundraising will be undertaken?	
	What personnel are required for the project?	
	Who will be the manager(s) of the project?	
	What risks are associated with the project?	
	What steps have been taken to cover those risks?	
	How will the project be promoted?	
	What reporting mechanisms have been established for the project?	
4.	Project Evaluation	
	Did the project meet the needs of the community?	Yes / No
	Was the project completed within budget?	Yes / No
	Did the project have significant club member involvement?	Yes / No
	What did the community consider went well?	
	What did the club members consider went well?	
	What did the community consider should be changed?	
	What did the club members consider should be changed?	
	Have the results been reported to the community, the club, District and RI?	Yes / No
	Has the project been celebrated with all involved?	Yes / No
	Did the club members have fun?	Yes / No
	Should the club repeat the project and, if so, when?	



Rotary Foundation Thought for The Week

41) This week's Rotary Foundation Thought is about Changing and Saving Lives.

Have you ever considered that your contribution to The Rotary Foundation may mean the difference between life and death? Rotary Foundation Matching Grant projects have helped provide the Malawi Children's Village (MCV) with everything from clean water, food and medications to blankets, sewing machines and a windmill. The Rotary Club of Canandaigua, New York, USA and Chakunga Sibale, director of the MCV, founded the program in 1997 and it is supported locally by the Rotary Club of Limbe. "The MCV has had a very great effect to relieve the suffering of children in my country," says Sibale. Rotarian's contributions to this project have literally meant the difference between life and death for many of the children in the MCV program.

Rotary Acronyms

PROBUS	Professional and Business - A Rotary sponsored group for retirees and semi-retired professional and business people Meet monthly
Provisional Club	A group organising the formation of a new club - Meets weekly until admitted to membership of Rotary International with minimum of 25 charter members
RAGS	Rotary Action Groups
RAM	Rotarians Against Malaria - Project to support anti-malaria projects in selected countries in Asia Pacific region
RAOAF	Rotary Australia Overseas Aid Fund
RAWCS	Rotary Australia World Community Services Ltd - A public company formed 1987 to co-ordinate and authorise the various international activities within Districts
RC	Rotary Club

Apologies & Guests

Members are booked in to attend every regular meeting of the Club, if you cannot attend a meeting or wish to book in a guest / partner please access the WEB at <http://www.kuringgairotary.org.au> before 3.00pm on the day of the meeting. An apology for future meetings may also be entered. If you do not apologise for non-attendance the Club must pay for your meal and you will be asked to reimburse the Club.

Guest Speakers

See club website: "Member Forum - Events" for whole year listing of events

23 May	Garden Festival—Report and Brainstorm
30 May	From Perth to Broome and the Pilbara—Eleanor Filewood
6 June	Carers Night and Millie Constable
13 Jun	Queen's Birthday holiday—no meeting
Mon 27 Jun	Changeover Dinner, Rotary Club of Ku-ring-gai
19 Sep	District Governor's visit

Market roster

Time	12 Jun
Banners	White, Frank
Signs	Timms, Graham Hungerford, Geoff
Morning Set up	White, Frank Thompson, John
0800 – 1030	Fletcher, Howard Krishnan, Bala
1030 – 1300	Evans, Emyr Midlam, Michael
1300 – 1530	Egan, Ross Forsythe, David

MARKET DUTIES: You must initiate changes & advise Geoff Hungerford. Third Shift returns signs & bins to St George Bank

Door team

Duty	May	June
Greeter	John Aitken	Emyr Evans
Team	Bala Krishnan	Roger Desmarchelier
Team	Greg Newling	Geoff Hungerford

NOTE: The door team is responsible for welcoming visitors and guests, recording payments and issuing copies of the record to the President, Secretary and Bulletin Editor. Please arrange your own replacement.

Happy days May 2011

Birthdays	
Jannet Pendleton	9-May
Patsy Hungerford	May

Anniversaries	
Malcolm Margaret Braid	7-May
Graham Judy Timms	11-May
John Janet Boyle	14-May
Michael Louise Tyler	16-May
Geoff Patsy Hungerford	18-May